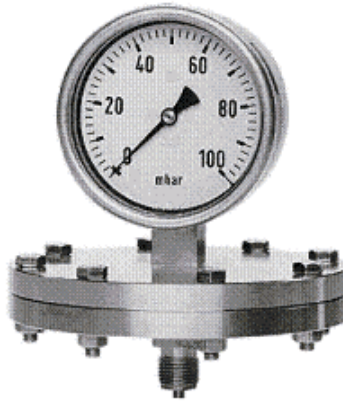


## Low pressure d. seal



Due to the large area of the diaphragm, the outstanding sensibility of this seal makes it suitable for the measure of very low pressures. Also available for vacuum. Process connection 1/2" BSP-Male. Available ranges from 25 mbar. Dismountable to repair.

### Technical data:

<b>Dial diameter:</b>	100 mm. / 160 mm.
<b>Case:</b>	Stainless steel AISI-304, bayonet bezel.
<b>Sensible element:</b>	Diaphragm stainless steel AISI 316 Ti (1.4571).
<b>Movement:</b>	Mechanical transmission (Schaeffer type) in stainless steel 304.
<b>Dial:</b>	Aluminium, White. Black figures.
<b>Window:</b>	Mineral glass.
<b>Process connection:</b>	1/2" BSP or NPT-Male.
<b>Accuracy:</b>	± 1,6% value final scale.

### Ranges in mbar

0...25	0...40	0...60	0...100	0...160
0...250	0...400	0...600		

### Ranges in bar

0...1	0...1,6	0...2,5	0...4	0...6
0...10	0...16	0...25		

Note: same ranges available in vacuum. Compound gauges (vacuum and pressure) also available.