

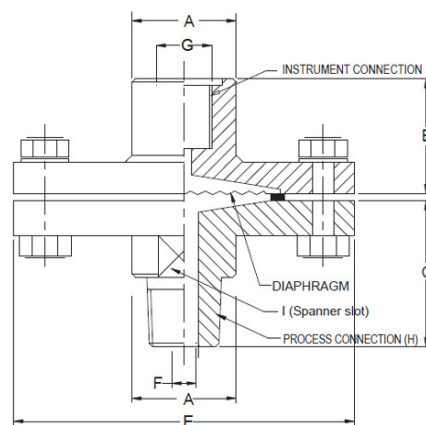
Diphragm seal 60



The diaphragm seals or chemical seals are intended to isolate the measuring element of pressure instruments (pressure gauges, switches, transmitters...) from thick, viscous and/or aggressive media fluids. This one is the most common classic model. Fully stainless steel made. Suitable for ranges from -1/0... up to 0...60 bar. Dismountable to be cleaned.

Technical data:

Body:	Inox version fully st. Steel AISI 316L.
Seals:	PTFE.
Diaphragm:	Stainless steel AISI 316 L., welded.
Process connection:	1/2" BSP-Male.
Accuracy:	at 20°C, add $\pm 0,5 \div 1,0\%$ on the instrument accuracy.
Ranges:	From -1/0 bar up to 0...60 bar.
Temperature service:	Maximum 90°C.
Dimensions:	See drawing.



A	~B	~C	E	F	G	H	I	Approx. Wt. #
30	26	47	98	Ø8	½" BSP(F)	½" BSP (M)	25	1500.0