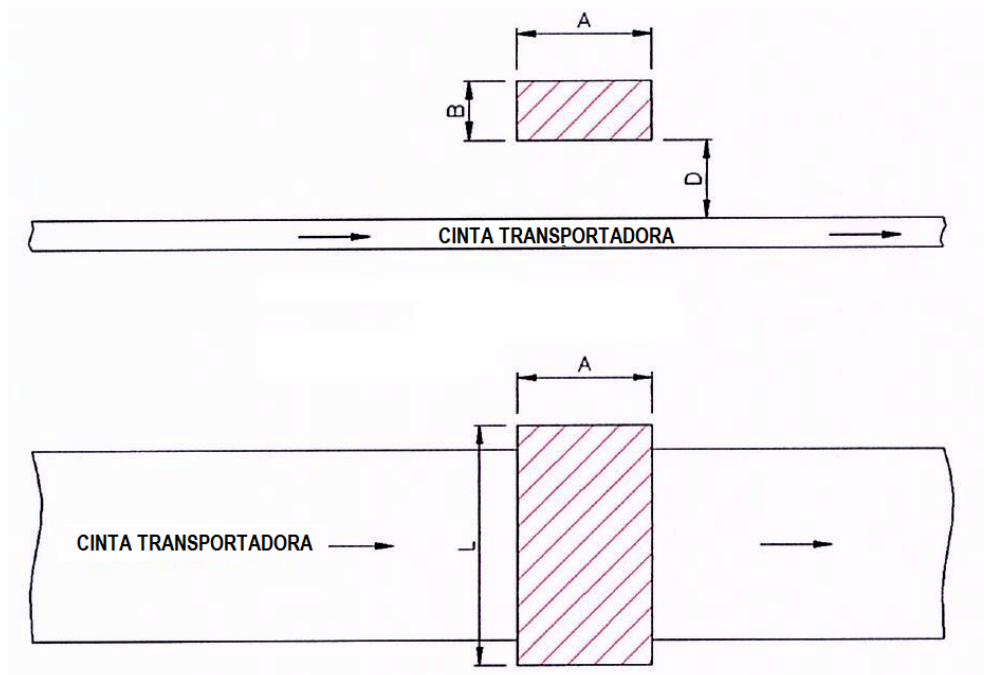


DISTANCIAS DE ATRACCIÓN DE LOS SEPARADORES MAGNÉTICOS



| Dimensiones del separador | | Distancia de atracción | | |
|---------------------------|---------|------------------------|-------------------|------------|
| A mm | B mm | D mm | | |
| | | Barra Ø 5 x 25 mm | Barra Ø 5 x 75 mm | Rosca M-16 |
| 75 | 30 | 50 | 70 | 45 |
| 105 | 30 | 70 | 90 | 55 |
| 105 | 50 | 75 | 100 | 60 |
| 180 | 90 | 120 | 140 | 95 |
| 205 | 88 | 115 | 155 | 95 |
| 280 | 95 | 155 | 200 | 125 |
| 310 | 130 | 165 | 225 | 130 |
| 505 | 180 | 255 | 370 | 180 |
| 810 | 180 | 160 | 380 | 195 |
| 610 | 247 | 295 | 430 | 225 |
| 810 | 247 | 315 | 460 | 240 |
| 810 | 350 | 335 | 480 | 250 |
| 900 | 410 | 360 | 500 | 275 |