

Prisma 35N/45N Surface Horizontal



Quiet-running multi-stage centrifugal pumps

Applications

For domestic and industrial supply.
Irrigation and hydropneumatic sets.

Materials

Pump body and impellers in stainless steel AISI 304.
Motor shaft in stainless steel AISI 420.
Diffusers in tecnopolimer.
Suction and discharge mountings in cast iron.
Mechanical seal in graphite and alumine.
O-rings in EPDM and NBR.
Motor housing in aluminium.

Motor

Asynchronous, two poles.
IP 44 protection.
Class F insulation.
Continuous operation.
Efficiency IE2.

Limitations

Maximum liquid temperature: 40 °C.



Hydraulic performance table

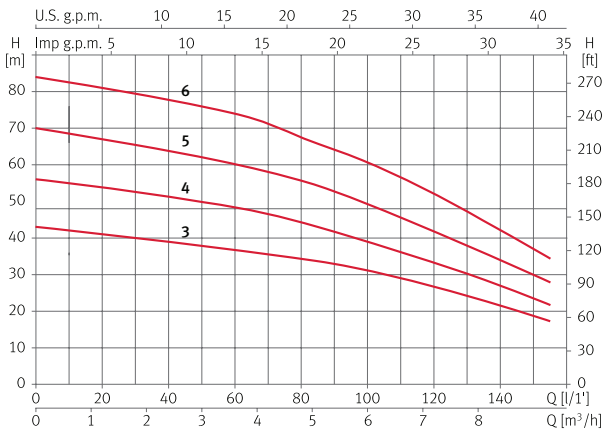
Model	I [A]			P1 [kW]		P2		c	l/min	20	40	60	80	100	120	140	150	1~230 V (model M)	3~400 V (model T)	
	1~230 V	3~230 V	3~400 V	1~230 V	3~400 V	[kW]	[HP]											[μF]	Code	Code
	m³/h																	1.2	2.4	3.6
Prisma 35 3N	6.7	4.5	2.6	1.5	1.4	0.8	1	25	mwc	41	39	36	34	31	27	22	18	129343	129346	
Prisma 35 4N	8.4	5.3	3.1	1.8	1.8	1.1	1.5	25		54	51	48	44	39	33	27	23	129344	129347	
Prisma 35 5N	10.2	6.9	4	2.3	2.2	1.5	2	30		68	64	60	55	49	41	34	30	129345	129348	
Prisma 35 6N		8.3	4.8		2.7	2.2	3			81	78	74	67	60	52	42	37		129349	

Model	I [A]			P1 [kW]		P2		c	l/min	25	50	75	100	125	150	200	250	1~230 V (model M)	3~400 V (model T)	
	1~230 V	3~230 V	3~400 V	1~230 V	3~400 V	[kW]	[HP]											[μF]	Code	Code
	m³/h																	1.5	3.0	4.5
Prisma 45 3N	7.9	5.2	3	1.8	1.7	1.1	1.5	25	mwc	37	36	35	33	30	27	18	8	132082	132084	
Prisma 45 4N	10	6.9	4	2.2	2.2	1.5	2	30		48	47	45	42	39	36	24	11	132083	132085	
Prisma 45 5N		8.6	5		2.8	2	3			61	59	56	54	50	45	31	15		132086	

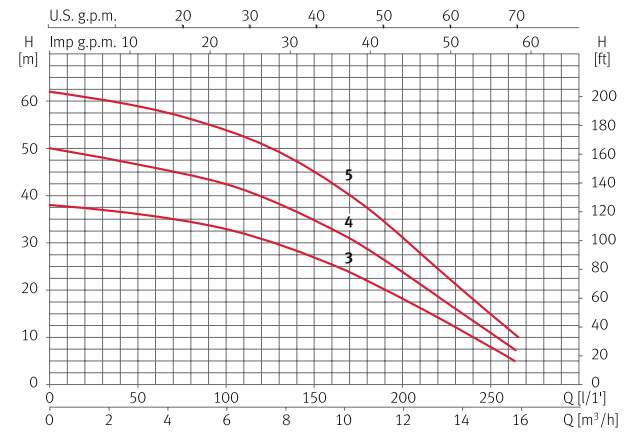
Prisma 35N/45N Surface Horizontal

Performance curves at 2900 rpm

Prisma 35N



Prisma 45N

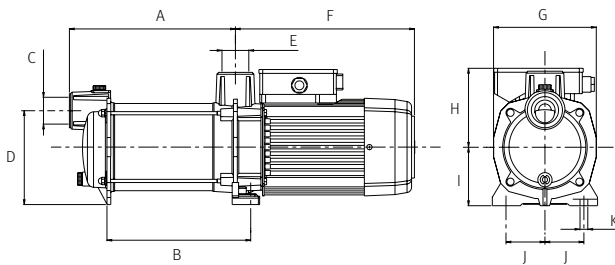


WATER SUPPLY SURFACE HORIZONTAL & VERTICAL

Dimensions and weights

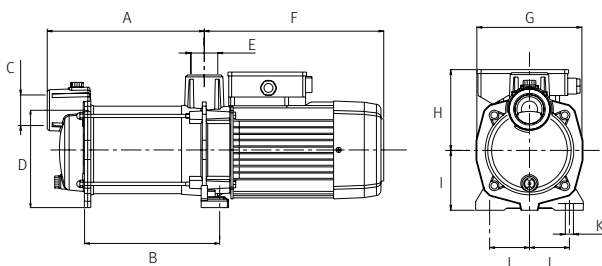
Prisma 35N

Model	A	B	C	D	E	F	G	H	I	J	K	Kg
Prisma 35 3	221.1	187.3	1 1/4"	147	1 1/4"	281.5	158	125.3	90	60	12	18.5/18.2
Prisma 35 4	246.6	211.8	1 1/4"	147	1 1/4"	281.5	158	125.3	90	60	12	20.5/18.6
Prisma 35 5	271.1	236.3	1 1/4"	147	1 1/4"	281.5	158	125.3	90	60	12	23.5/20.6
Prisma 35 6	295.6	260.8	1 1/4"	147	1 1/4"	281.5	158	125.3	90	60	12	23.7



Prisma 45N

Model	A	B	C	D	E	F	G	H	I	J	K	Kg
Prisma 45 3	245.9	211.6	1 1/2"	152	1 1/4"	281.5	158	125.3	90	60	12	22.6/18.6
Prisma 45 4	276.6	242.3	1 1/2"	152	1 1/4"	281.5	158	125.3	90	60	12	23.7/21.2
Prisma 45 5	307.3	273	1 1/2"	152	1 1/4"	281.5	158	125.3	90	60	12	25.3



*Service kits are available on request