

GDU 121

Gear display unit aluminium case

Description

GDU 121 is a satellite and input module as an integral part of a complete data acquisition to monitor system showing gear number, RPM and PIT LIMITER condition.

As part of the Magneti Marelli telemetry system, GDU 121 can communicate over a CAN network with Marelli ECUs receiving and displaying all available information.

Main Features

- 1 digital inputs
- Receive and display data from CAN line (gear number)
- LEDs managed only via CAN

Benefits

- Selectable high-brightness
- 1 CAN line
- Easy to use and to configure



Typical Applications

In circuit and rallies top application

One make race series

DATA DISPLAY

GDU 121

Gear display unit aluminium case

Technical Characteristics

Inputs

On/Off digital 1

Communications

CAN line (1 Mbit/s) 1

RS 232 1

Other Characteristics

Power supply 8 to 18 V

Operating temperature range (internal) -20 to 70 °C

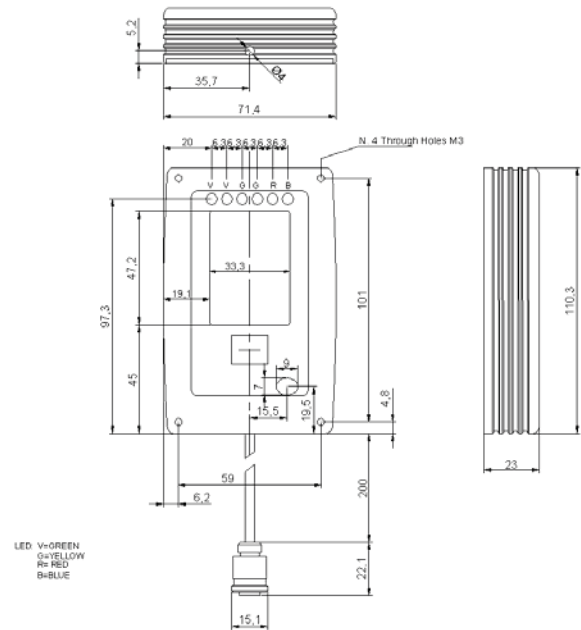
Dimensions see drawing

Weight (approx.) 210 g

Connector Pin Out

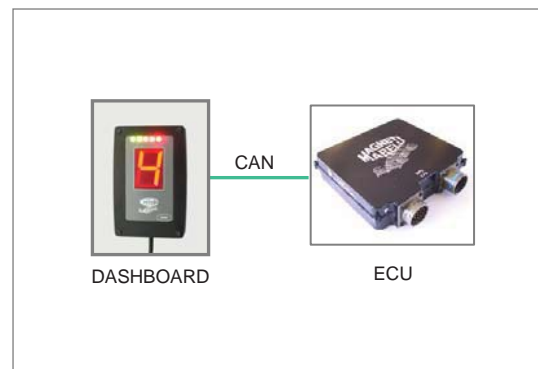
PIN OUT HOUSING DEUTCH uAS – AS606-05PN-HE	
PIN	DESCRIPTION
1	+V BAT
2	CAN P
3	CAN N
4	GND
5	T CAN (close to CAN P)

Dimensions



Dimensions in millimetres

Application Schematics



For further information, please contact:



JMR Motorsport s.c - Carrer E Nº.7 - Pol. Ind.
Pont Xetmar - Cornellà del Terri - GIRONA-
Tlf. +34 972 59 52 34 email: info@jmr-motorsport.com

October 2007
rel. 05
page 2 of 2