

GPI

Grand Prix Fuel Injector
Up to 3.0 MPa - Up to 2.2 L/min
Multihole technology

Description

GPI injector has been developed to meet the market requirements for a cost effective injector for high performance racing injection systems.

Incorporating Formula 1 technology, it is available in basic configuration or customized in spray shape and flow rate and will be selected in narrow precision classes.

Main Features

- Delivery pressure range 0.3 to 3 MPa
- Static flow range 0.15 to 2.2 L/min
- Spray pattern multihole
- Driver On/Off or Peak & Hold

Benefits

- Multihole spray shaping
- Custom spray configurations can be developed on request
- On/Off or Peak & Hold driven
- High precision
- Suitable for use with Methanol
- Small dimension & weight

Typical Applications

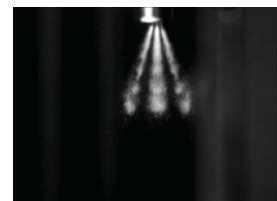
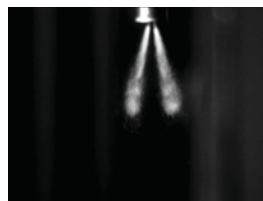
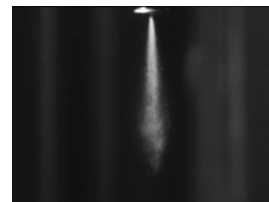
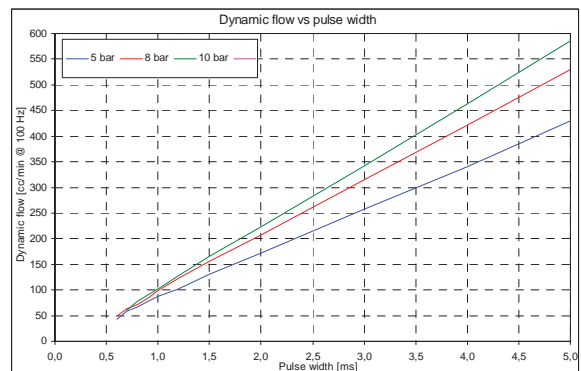
IRL

In circuit and rallies application

Race motorcycle application



Typical Performance



INJECTORS

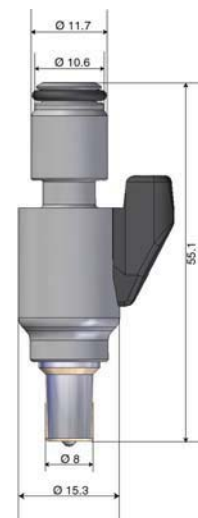
GPI

Grand Prix Fuel Injector
Up to 3.0 MPa - Up to 2.2 L/min
Multihole technology

Technical Characteristics

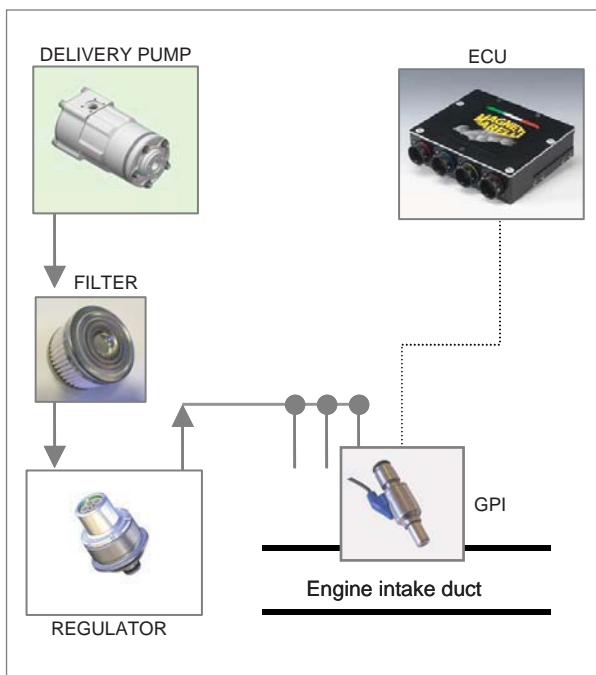
Delivery pressure range.....	0.3 to 3	MPa
Static flow range	0.15 to 2.2	L/min
Driver current	< 3	A
Spray angle.....	up to 75°	
Power supply	8 to 16	V
Operating temperature range.....	-20 to 120	°C
Connector type.....	cable 2 x 0.3 mm ² /37	
Weight.....	38	g

Dimensions



Dimensions in millimetres

Application Schematics



For further information, please contact:

GPI-0838XXXXXX00



JMR Motorsport s.c - Carrer E N°.7 - Pol. Ind.
Pont Xetmar - Cornellà del Terri - GIRONA-
Tlf. +34 972 59 52 34 email: info@jmr-motorsport.com

November 2007
rel. 06
page 2 of 2