

IWP

Pico Top Feed Racing Injector
Up to 0.5 MPa - Up to 0.66 L/min

Description

The IWP "Pico" top feed injector is a standard production component, tested and selected for racing applications.

The characteristics of the injector are a fast pulse response, high precision, high dynamic range and optimum fuel atomization. These are achieved by a high performance ON-OFF actuating electromagnet with opposing expansion poles that moves an internal injector valve on high-precision ground cylindrical slides, and a high precision nozzle.

The injector has a stainless steel body, a fuel-resistant plastic connector, martensitic stainless steel internal valve and an electromagnet with a low carbon content stainless steel armature.

The electrical connection to the control unit is via a Mini-Timer plastic plug.



Main Features

- Pressure range 0.3 to 0.5 MPa
- Static flow range 0.33 to 0.66 L/min
- Driver current..... 0.8 A
- Spray shape single spray or twin jet

Benefits

- Methanol
- Multihole spray shaping
- On off driven
- High precision
- Small dimension & weight

Typical Applications

In professional circuit and rally applications
Touring car

INJECTORS

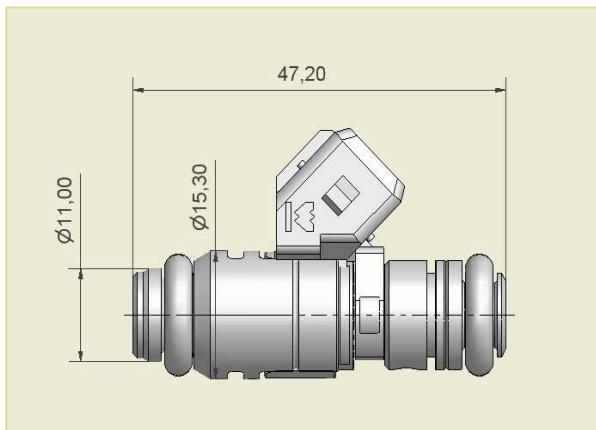
IWP

Pico Top Feed Racing Injector
Up to 0.5 MPa - Up to 0.66 L/min

Technical Characteristics

Pressure range	0.3 to 0.5	MPa
Static flow range	0.33 to 0.66	L/min
Driver current	0.8	A
Spray type	multihole	
Spray shape	single spray or twin jet	
Power supply	8 to 16	V
Operating temperature range.....	-30 to 110	°C
Connector type.....	AMP Junior 2 ways minitimer	
Weight.....	35	g

Dimensions



Dimensions in millimetres

Injector	IWP043	IWP063	IWP145	
Nominal pressure	500	500	500	kPa
Static flow rate	421.1	498.3	658	cm ³ /min
Spray shape	Single spray	Twin jet	Twin jet	

For further information, please contact:

IWP-0838XXXXXXXXX00



JMR Motorsport s.c - Carrer E Nº.7 - Pol. Ind.
Pont Xetmar - Cornellà del Terri - GIRONA-
Tlf. +34 972 59 52 34 email: info@jmr-motorsport.com

October 2007
rel. 04
page 2 of 2

Application Schematics

