

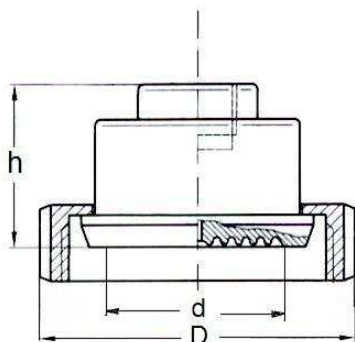
## Diaphragm seal DIN11851



For food, biochemical and pharmaceutical industry. Easy installation, removing and fast cleaning. Process connections according to DIN 11851. Other types (SMS standard, IDF standard...) on request.

### Technical data:

<b>Body:</b>	Stainless steel AISI 316L. Coupling nut AISI 304.
<b>Diaphragm:</b>	Stainless steel AISI 316L, welded.
<b>Accuracy:</b>	at 20°C, add $\pm 0,5 \div 1,0\%$ to the accuracy instrument.
<b>Ranges:</b>	From 0...2,5 bar up to 0...40 bar (depending on the DN).
<b>Temperature service:</b>	Maximum 80°C.
<b>Available sizes:</b>	1" (DN25), 1 1/2" (DN40) and 2" (DN50).
<b>Instrument connection:</b>	1/2" BSP-Female.
<b>Process connection:</b>	Coupling nut according to DIN 11851.
<b>Dimensions:</b>	See drawing.



d	D	h	thead
25	63	44	Rd 52 x 1/6
40	78	39	Rd 65 x 1/6
50	92	50	Rd 78 x 1/6