

Isometric manometers

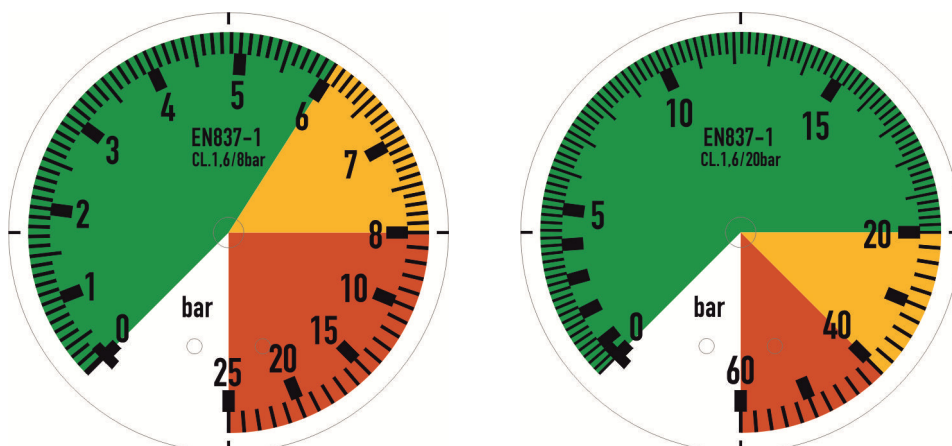


Isometric pressure gauges filled with glycerine for assemblies in hydraulic systems submitted to overpressures. Commonly used in field pulverizing systems with spraying nozzles containing diluted fertilizers.

Technical data:

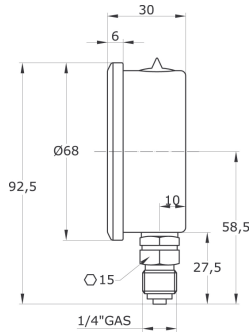
| | |
|-----------------------|--|
| Nominal size: | 63 mm. |
| Case: | Stainless steel AISI 304. Riveted rim. Protection degree IP65. |
| Wetted parts: | Bourdon tube in Zinnbronze/CuSn8 alloy, brass connection port. |
| Movement: | Brass. |
| Dial: | Aluminium, white. Black figures. |
| Pointer: | Aluminium, black. |
| Window: | Acrylic. (glass upon request). |
| Process conn.: | 1/4" BSP-M. |
| Accuracy: | 1,6% final scale according to EN 837-1. |
| Temp. service: | -5°C...+65°C. |
| Ranges: | 0-25 bar and 0-60 bar |

Dials



Dimensions in mm

Direct mounting ("D" type)



Back flange for wall mounting ("A" type)

