

# CIRCULAR MAGNETIC CHUCKS

This model is designed for use on lathes and grinding machines. It is installed using a chuck back plate, in the same way as for a normal jaw chuck

It offers progressive magnetisation to help centre the piece.

Chucks of 250 $\phi$  or more are prepared for making a hole in the centre of the top plate in order to fit a stop or centring device.

It is available in two different pole spacings: Fi-Pol and Max-Pol.

## FI-POL

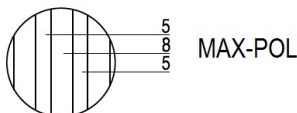
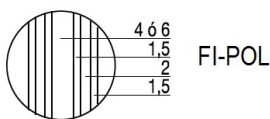
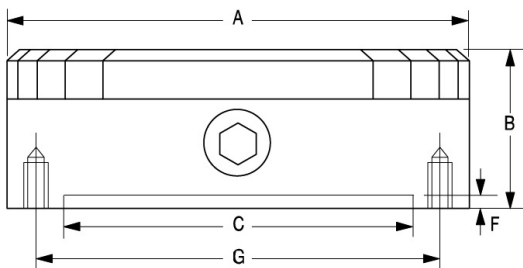
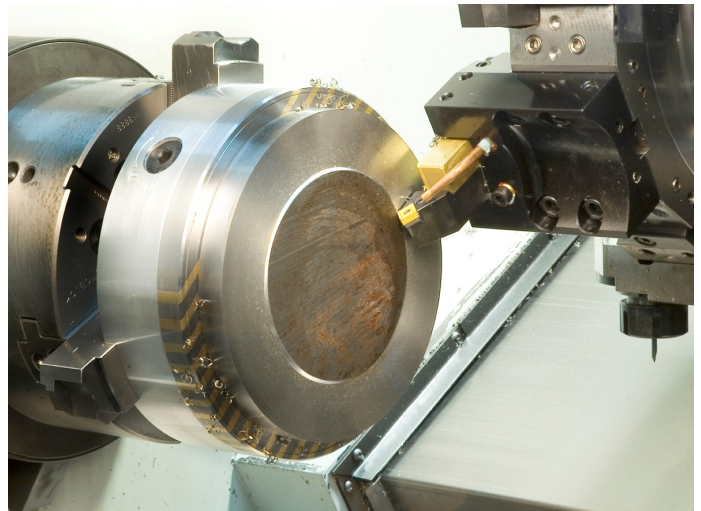
Fine pole spacing: 6-1.5-2-1.5 (6 mm of steel, 1.5 of brass, 2 of steel and 1.5 of brass).

Suitable for small or narrow pieces (less than 5 mm wide).  
Chucks of 100 $\phi$  and 130 $\phi$  have 4 mm of steel instead of 6.  
Dispersion of the magnetic field: 10 mm high  
Upper plate limit wear: 6 mm

## MAX-POL

Pole spacing of 8-5 (8 mm of steel and 5 of brass).

It has greater magnetic power than Fi-Pol and is suitable for all kinds of pieces, from thicknesses of 5 mm to the largest pieces.  
Dispersion of the magnetic field: 10 mm high  
Upper plate limit wear: 6 mm



FI-POL									
CODE	$\phi$ A mm	B mm	$\phi$ C mm	F mm	$\phi$ G mm	FIXING HOLES	POLE PITCH Iron-Brass-Iron-Brass	Nº OF LEVERS	WEIGHT Kg
13.10.001	100	62	70	2,5	91	3 x M-5	4-1,5-2-1,5	1	3
13.10.002	130	62	90	2,5	120	4 x M-6	4-1,5-2-1,5	1	5
13.10.003	160	75	125	3	142	4 x M-8	6-1,5-2-1,5	1	8
13.10.004	200	80	150	4,5	182	4 x M-8	6-1,5-2-1,5	1	13
13.10.006	250	80	200	4,5	232	4 x M-8	6-1,5-2-1,5	1	20
13.10.007	300	85	250	4,5	285	4 x M-8	6-1,5-2-1,5	1	29

MAX-POL									
CODE	$\phi$ A mm	B mm	$\phi$ C mm	F mm	$\phi$ G mm	FIXING HOLES	POLE PITCH Iron-Brass	Nº OF LEVERS	WEIGHT Kg
13.20.004	200	75	150	4,5	182	4 x M-8	8-5	1	13
13.20.006	250	80	200	4,5	232	4 x M-8	8-5	1	20
13.20.007	300	85	250	4,5	285	4 x M-8	8-5	1	29
13.20.008	350	85	300	4,5	334	4 x M-8	8-5	1	40
13.20.009	400	100	300	5	350	6 x M-10	8-5	1	59
13.20.010	450	100	350	5	400	6 x M-10	8-5	2	70
13.20.011	500	100	400	5	450	6 x M-10	8-5	2	90