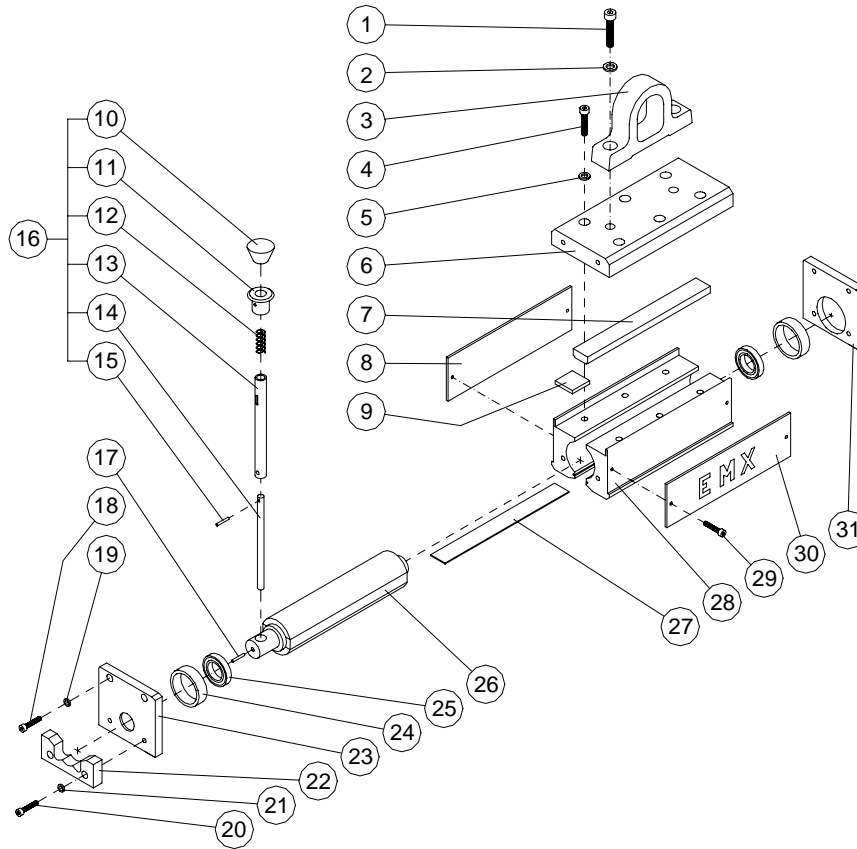


LIFTING MAGNETS SERIES EMX: LIST OF COMPONENTS



PIECE	DESCRIPTION	EMX-250		EMX-500		EMX-1000		EMX-2000	
		CODE	QT.	CODE	QT.	CODE	QT.	CODE	QT.
1	Allen screw	CG.00.048	2	CG.00.082	2	CG.00.082	2	CG.01.005	2
2	Security ring	VI.43.003	2	VI.43.006	2	VI.43.006	2	VI.43.007	2
3	Subjection ring	EM.31.002	1	EM.32.002	1	EM.32.002	1	EM.34.001	1
4	Allen screw	CG.06.034	4	CG.06.013	6	CG.06.025	6	CG.06.035	8
5	Security ring	VI.43.003	4	VI.43.003	6	VI.43.004	6	VI.43.005	8
6	Top plate	--	1	--	1	--	1	--	1
7	Separator (aluminium)	EM.31.051	1	EM.32.051	1	EM.33.051	1	EM.34.051	1
8	Label	XC.02.036	1	XC.02.038	1	XC.02.040	1	XC.02.044	1
9	Neodymium magnet	IM.04.025	--	IM.04.021	--	IM.04.024	--	IM.04.027	--
10	Knob with threaded stud	PM.21.101	1	PM.21.102	1	PM.21.103	1	PM.21.104	1
11	Tension piece (aluminium)	PQ.54.003	1	PQ.54.013	1	PQ.54.023	1	PQ.54.033	1
12	Spring	MO.10.021	1	MO.10.022	1	MO.10.023	1	MO.10.024	1
13	Lever tube	PQ.54.001	1	PQ.54.011	1	PQ.54.021	1	PQ.54.031	1
14	Lever shaft	PQ.54.002	1	PQ.54.012	1	PQ.54.022	1	PQ.54.032	1
15	Pin	PS.20.022	1	PS.20.023	1	PS.20.024	1	PS.20.018	1
16	Complete lever	PQ.50.010	1	PQ.50.011	1	PQ.50.012	1	PQ.50.013	1
17	Allen stud	CG.21.217	1	CG.21.218	1	CG.21.231	1	CG.21.231	1
18	Allen screw	CG.00.024	6	CG.00.024	6	CG.00.049	6	CG.00.059	6
19	Security ring	VI.43.002	6	VI.43.002	6	VI.43.003	6	VI.43.004	6
20	Allen screw	CG.00.030	2	CG.00.032	2	CG.00.053	2	CG.00.063	2
21	Security ring	VI.43.002	2	VI.43.002	2	VI.43.003	2	VI.43.004	2
22	Lever safety piece	EM.31.012	1	EM.32.011	1	EM.33.012	1	EM.34.011	1
23	Shaft cover (aluminium)	EM.31.033	1	EM.32.031	1	EM.33.032	1	EM.34.031	1
24	Bearing support (bronze)	RD.30.202	2	RD.30.212	2	RD.30.222	2	--	--
25	Bearing	RD.21.007	2	RD.21.006	2	RD.21.008	2	RD.21.011	2
26	Magnetic rotor	--	1	--	1	--	1	--	1
27	Protective sheet	PP.31.098	1	PP.31.066	1	PP.31.065	1	PP.31.078	1
28	Lateral piece	--	2	--	2	--	2	--	2
29	Screw	CG.72.004	4	CG.72.004	4	CG.72.004	4	CG.72.004	4
30	Label	XC.02.037	1	XC.02.039	1	XC.02.041	1	XC.02.045	1
31	Back cover (aluminium)	EM.31.023	1	EM.32.025	1	EM.33.022	1	EM.34.021	1