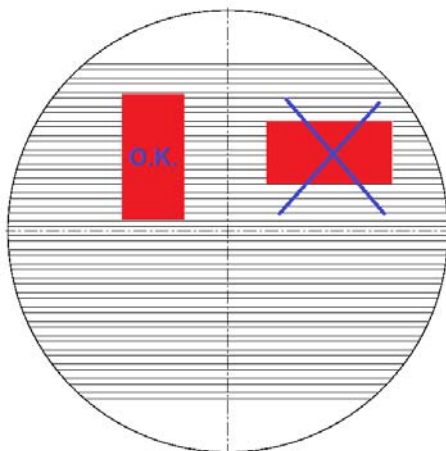
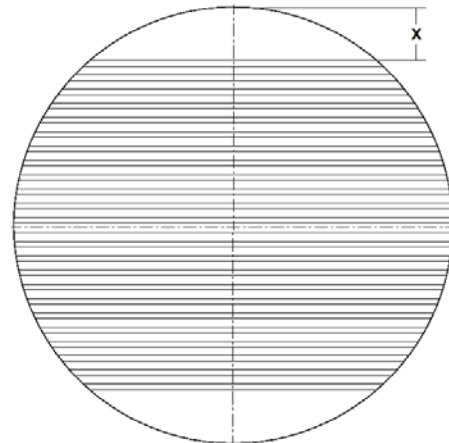


CIRCULAR MAGNETIC CHUCKS (parallel pich pole)

CODE	dimension mm	Centered hole		Useful life mm	Max. RPM	Dimension X mm
		Ø max. (mm)	Max. depth (mm)			
13.10.001	Ø100 Fp	no possible	-	5	1500	16
13.10.002	Ø130 Fp	no possible	-	5	1200	17,5
13.10.003	Ø160 Fp	no possible	-	7	1000	22,5
13.10.004	Ø200 Fp	no possible	-	5	800	31,5
13.10.006	Ø250 Fp	20	15	5	700	40
13.20.004	Ø200 Mx	6	10	5	800	26
13.20.006	Ø250 Mx	20	15	5	700	31,5
13.20.007	Ø300 Mx	25	15	5	700	37
13.20.008	Ø350 Mx	25	15	7	600	36
13.20.009	Ø400 Mx	30	15	7	500	48
13.20.010	Ø450 Mx	30	15	8	450	47
13.20.011	Ø500 Mx	30	15	8	400	46



Correct position of the pieces on a magnetic chuck:

The working piece must cross as many poles as possible.